

GALLERY EXPLORATION

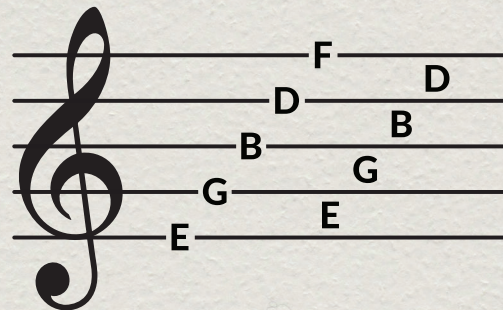
ACTIVE LEARNING GUIDE

MUSIC STUDIO

COMPOSE IT!

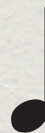
A **Composer** is someone who's job is to write music for other **Musicians** to perform. They use something called a musical **Staff** which helps organize the musical pitches. Each of the lines represent a different musical **Pitch** and the shapes of the notes tell you how long to hold each note.

These different letters represent a different pitch in music. There are **7 Diatonic Pitches** in music: A, B, C, D, E, F, and G. These pitches repeat so after G, the musical alphabet restarts again with another higher "A." The musical staff is organized so that these different pitches each fall on a different **Line** or **Space** on the staff. The most important thing to remember is that when the notes are positioned **Higher** on the Staff, they have **Higher Pitch** then notes positioned **Lower** on the staff. If you are singing a song and the notes are going up, then you can imagine that the notes on the staff are also going up!



Try to write a song using the staff below!

Here is a key to help you remember some basic musical notes.



Quarter Note
1 Beat in 4/4 Time



Half Note
2 Beats in 4/4 Time



Whole Note
4 Beats in 4/4 Time

